

Ready for the future,  
caring for the customer



Eddy Current Probes

# SOROTEC PROBE

Inspection of the WER  
Steam Generator Collector

 **tecnatom**  
[www.tecnatom-ndt.com](http://www.tecnatom-ndt.com)

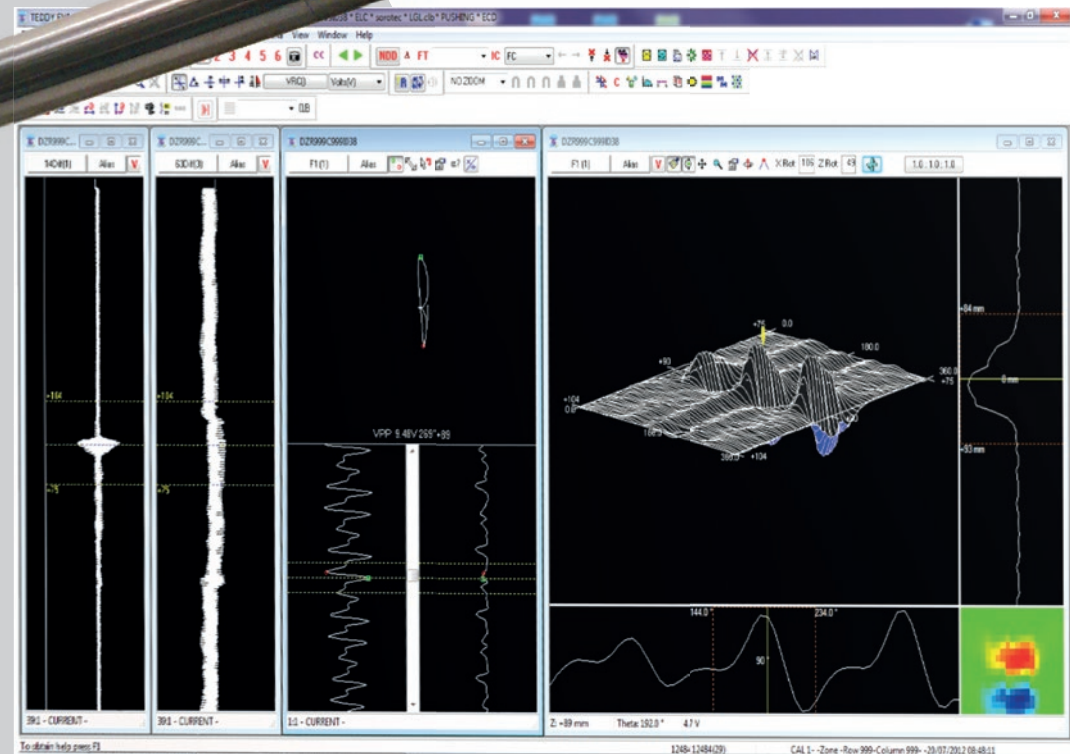
CE

# SOROTEC PROBE

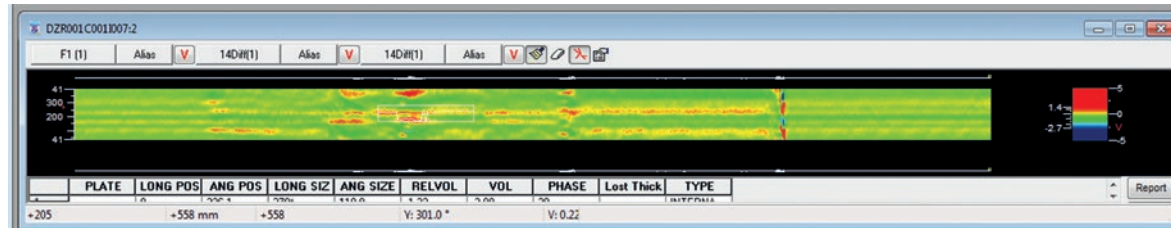
Inspection of the  
VVER team Generator Collector

Motorized rotating probe, SOROTEC M1 was designed for header inspection in the flaring area of heat exchanger tubes of steam generator model VVER 1000. Designed to work up to 6000 rpm. Signal is transmitted from the rotating cables to the stationary cables by mean of the electrical transformers.

**Rotating probe for VVER  
collector - SOROTEC**



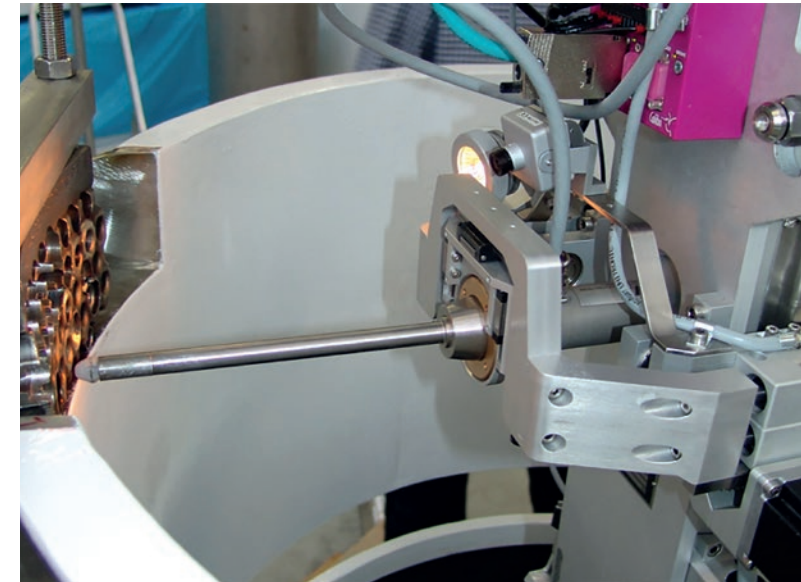
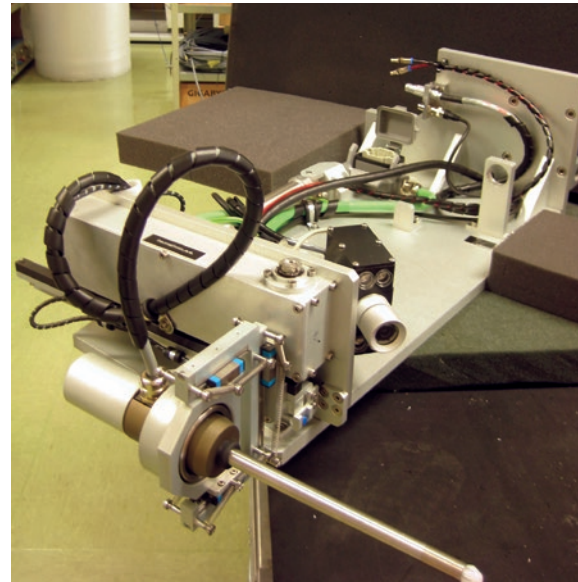
Ready for the future,  
caring for the customer



- Inspection of the tubesheet for crack detection
- Inspection from the inner surface of tubes

### SOROTEC M1. Technical specifications

Total length	332 mm
Shaft diameter	12.3 mm
Body diameter	36 mm (motor box)
Effective length	176 mm
Shaft material	Stainless Steel 316
Centering material	Nylon PA6.6
Detective head	2 search coils 1 exciting coil Differential mode
Input voltage	24 VAC
Connecting cable	2 m / LEMO connector
Rotating speed	Up to 6000 rpm
Electrical motor	MAXON motor
Trigger signal	Internal
Signal transmission	Dual transformer
Durability	High durability. No contact between tube and rotating head.



**Manipulators for VVER steam generators working with SOROTEC probes**

# SOROTEC PROBE

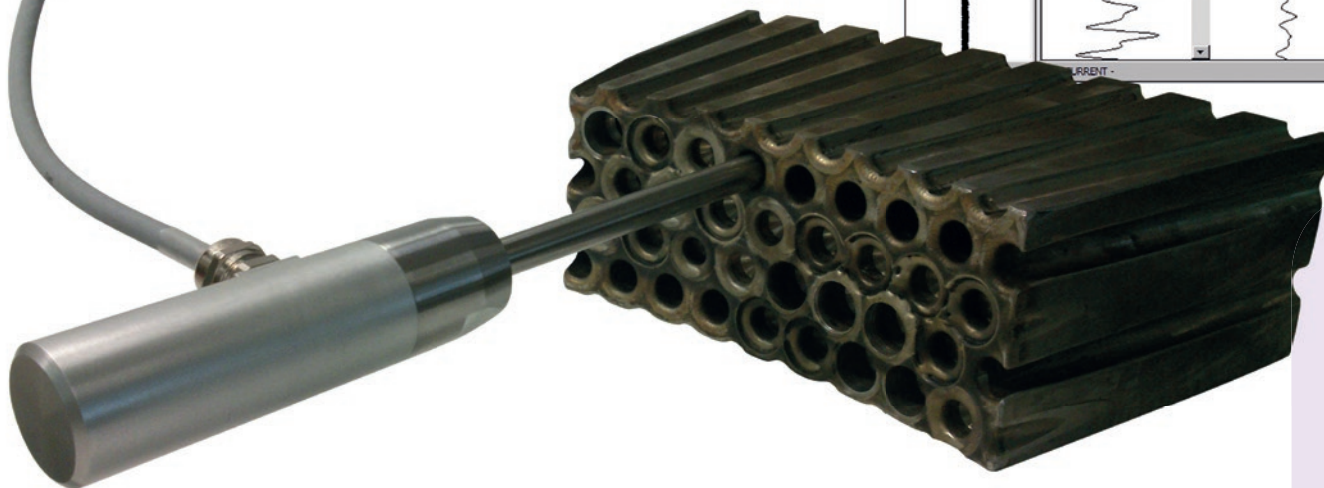
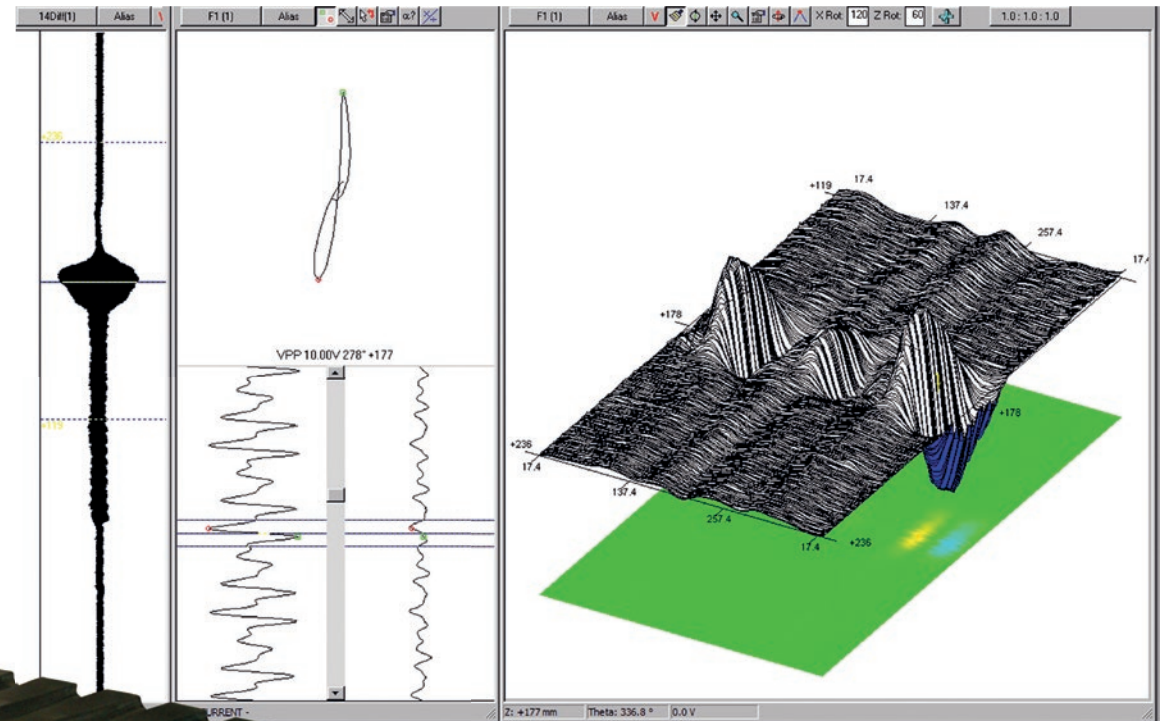
Inspection of the  
WER team Generator Collector

Ready for the future,  
caring for the customer

## ORDERING INFORMATION

Reference	Description
RC120VEF02---	Sorotec M1 probe

SOROTEC inspecting  
a mock up



 **tecnatom**

Tecnatom, S.A.  
Av. Montes de Oca, 1  
28703, San Sebastián de los Reyes / Madrid- Spain

[www.tecnatom-ndt.com](http://www.tecnatom-ndt.com)

